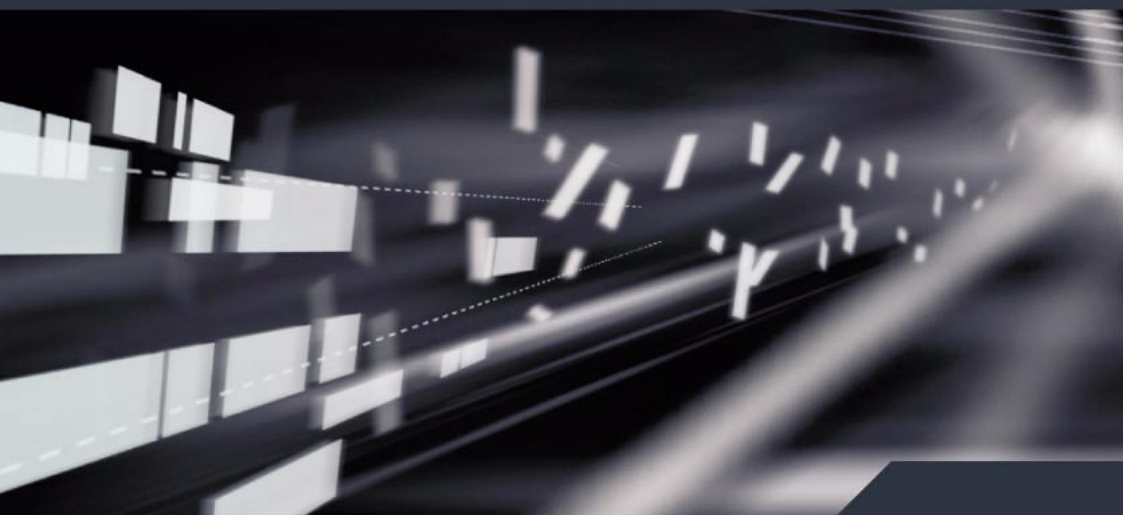


Using Cubase SX/SL with DSP Factory

# Cubase • SX/SL 3

MUSIC CREATION AND PRODUCTION SYSTEM



Manual by Anders Nordmark

Quality Control: C. Bachmann, H. Bischoff, S. Pfeifer, C. Schomburg

The information in this document is subject to change without notice and does not represent a commitment on the part of Steinberg Media Technologies GmbH. The software described by this document is subject to a License Agreement and may not be copied to other media except as specifically allowed in the License Agreement. No part of this publication may be copied, reproduced or otherwise transmitted or recorded, for any purpose, without prior written permission by Steinberg Media Technologies GmbH.

All product and company names are <sup>™</sup> or <sup>®</sup> trademarks of their respective owners. Windows XP is a trademark of Microsoft Corporation.

© Steinberg Media Technologies GmbH, 2004.

All rights reserved.



# Introduction

The Yamaha DSP Factory is an audio hardware system for professional digital multitrack recording and mixing on personal computers. The core of this system is the DS2416 Digital Mixing Card, a PCI-bus audio card with professional specifications, extensive mixing capabilities and on-board EQ, dynamics and effects. It is possible to install and digitally connect two DS2416 cards in one computer. Each card can also be used with one or two optional AX44 Audio Expansion Units, for up to eight additional analog inputs and outputs per card.

This manual assumes that you have at least one DS2416 installed, tested and running under Windows XP.

---

**For information about how to install, test and troubleshoot the DS2416, please refer to the documentation supplied with the card. There you will also find detailed information about audio hardware specifications and features.**

---

# The DSP Factory in Cubase SX/SL

By using the DSP Factory in conjunction with Cubase SX/SL, you get a complete graphical interface with full control over the card's features. The DS2416 audio card will behave like an external digital mixer, feeding digital signals into Cubase SX/SL's inputs and accepting digital signals from Cubase SX/SL's output busses.

The Cubase SX/SL/DSP Factory combination allows you to:

- Record and play back using multiple inputs and outputs.  
By itself, the DS2416 provides four inputs and outputs (two analog and two digital). Each AX44 unit adds four analog inputs and outputs, and there is also support for upcoming I/O units.
- Use the DS2416 EQ, dynamics and effects for separate Cubase SX/SL audio channels or for combinations of channels.
- Route DSP Factory outputs to external effects, accessible from the VST effect sends.
- Synchronize audio playback to external wordclock.

# Setting up Cubase SX/SL for use with DSP Factory

---

Again, this assumes that you have installed the DSP Factory hardware according to the instructions in the supplied manual, and tested that it runs properly under Windows. Also, please note that the DSP Factory windows require a screen resolution of at least 1024 x 768 to be fully viewable.

---

Before you can start working, you need to make a few settings:

1. Pull down the Devices menu and select Device Setup.
2. Select VST Audiobay.
3. Make sure the “ASIO SW+DS32” Driver is selected on the Master ASIO Driver pop-up menu.  
See the note below about the two ASIO Devices.

## About the Two ASIO Devices

---

**The ASIO drivers described below may have been included with the Yamaha DS2416 package. However, make sure to check Yamaha’s web site for updated drivers!**

---

There are two ASIO Devices for the Yamaha DS2416, “ASIO SW+DS32” and “ASIO SW+DS16”. Which one to select depends on your computer power and whether you need 24 bit recording:

- If you want to record and play back 24 bit audio, you need to select the 32 bit device (“ASIO SW+DS32”).  
It is possible to record in 24 bit mode with the 16 bit device selected, but the created audio files will only have 16 bit accuracy.
- If you experience performance problems with the 32 bit device (and don’t use 24 bit audio), you should select the 16 bit device (“ASIO SW+DS16”).  
The data transfer between the program and the audio card requires quite a lot of computer power. This load is drastically reduced if you use the 16 bit device.

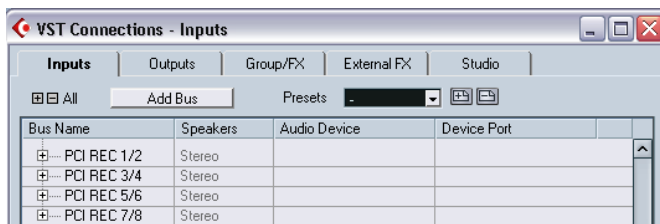
## Routing Audio between Cubase SX/SL and the DSP Factory

Audio routing with the DSP Factory is extremely flexible, allowing you to connect channels, aux sends and busses to various physical outputs and inputs. This is done in the special DSP Factory windows, as described on [page 13](#). However, first you need to “connect” Cubase SX/SL to the DSP Factory:

### Assigning Inputs

1. Pull down the Devices menu and select VST Connections.

The VST Connections window appears. This is where you view, add and set up input and output busses.



2. Open the “Inputs” tab by clicking on it.  
By default, there is a stereo bus called “Stereo In”.
3. Click the Add bus button.  
The “Add bus” window is opened. Select the Stereo format from the Configuration pop-up menu, set the “Count” value to “4” and click OK. Now, four input pairs are shown for the installed DS2416 card.
4. In the VST Connections window click the “+ All” button so that the individual inputs in the busses are shown.  
The Device Port column shows the physical inputs that are used by the bus.
5. Click in the Device Port column for the first “Left” channel.  
A pop-up menu appears, listing all inputs on your DS2416.
6. Select the input you want to use for the left channel in the stereo bus.  
Proceed the same way for the left channels in the other input pairs.
7. Select the input for the right channels in the same way.
8. Close the VST Connections window and open the Mixer.  
In the Mixer you can now see the assigned input busses and Cubase SX/SL accepts the digital signals from the DS2416 card as input sources.

## Assigning Output Busses

1. Pull down the Devices menu, select VST Connections and open the Outputs tab.  
Repeat the steps described above until eight busses are shown in the Mixer.
2. Make sure that each bus is assigned to the desired DS2416 PCI Out.



---

These “PCI Outs” are not the physical outputs of the audio hardware, but rather “output lines” connecting Cubase SX/SL to the DS2416. The actual routing to physical outputs is done in the DSP Factory windows, as described on [page 34](#).

---

3. If you like, rename the busses by clicking in their name fields and typing in new names.  
These names will be shown on the Output pop-up menus in Cubase SX/SL.

## Selecting Inputs and Outputs for the Audio Channels

This description assumes that you have set the number of mono and Stereo audio Tracks so that it corresponds with the number of output bus channels (16 if you have one DS2416 card installed). It also assumes that you want each audio channel in Cubase SX/SL assigned to a separate mixer channel strip in the DS2416 console. Of course, there are other possible routings (you may want to send a combination of audio channels to a Group or directly to the same DS2416 channel strip, you may want to reserve some DS2416 channels for use as effect sends, etc.).

1. Open the Mixer.
2. Select Inputs for the channels by pulling down the Input pop-up menus at the top of the channel strips.  
There should be eight Inputs available for each installed DS2416 card (four stereo Input pairs).
3. Route each stereo audio channel to a separate Output Bus, by using the pop-up menus in the Input/Output Settings section of the channel strips.
4. For mono channels, select the same Output Bus for two (mono) channels, and then pan the sides hard left/hard right.  
Now, each audio channel is assigned to a separate channel strip in the DS2416 Factory Input console.

### Assigning Group Channels to the DS2416

You can assign the outputs of Group channels to the DS2416 busses in the same way as with the audio channels, by using the pop-up menus in the Input/Output Settings section of the group channel strips.

### Assigning Effect Sends to the DS2416

By assigning VST Effect Sends to one of the Output Busses, you route the send to a channel strip in the DS2416 console. You can use this feature to address the on-board effects in the DS2416, to create several different monitor mixes during playback, etc. Note that this assignment is done individually for the effect sends of each audio channel (by using the pop-up menus to the right in the Channel Settings window).

# The Default Signal Routing

This section describes how signals are routed by default, when you first start using the DS2416 card with Cubase SX/SL. If you wish you can change the signal routing, as described on [page 32](#). However, this default routing allows you to perform basic playback and recording, and to use the built-in effects without having to change the routing.

---

**For additional info, please refer to the diagrams and list in the DS2416 documentation.**

---

## About the DS2416 “Channels”, Busses and Sends

Before we describe the actual signal routing, here's some information about how the DS2416 is configured:

- Each DS2416 card handles 24 separate mixer channels.  
To separate these from the audio channels in Cubase SX/SL, we will call them “DS channels” from now on.
- There is one main stereo mix out and eight Bus Sends (four stereo pairs).  
Each DS channel can be assigned to any combination of the busses and the stereo mix.
- There are six Aux Sends.  
Each DS channel has send levels and pre/post fader switches for the sends.

# The Default Routing of signals from Cubase SX/SL to DS2416

There are sixteen separate “lines” from Cubase SX/SL to the DS2416. In Cubase SX/SL, these appear as Output Busses (see [page 7](#)). In the DSP Factory Input Console window, the “lines” from Cubase SX/SL are by default connected to DS channel 1 to 16, as follows:

VST Output (and default Output Bus)	DS2416 Channel
DS2416 #1 PCI 1/2	DS Channel 1
DS2416 #1 PCI 1/2	DS Channel 2
DS2416 #2 PCI 3/4	DS Channel 3
DS2416 #2 PCI 3/4	DS Channel 4
.	.
.	.
.	.
DS 2416 #8 PCI 15/16	DS Channel 15
DS 2416 #8 PCI 15/16	DS Channel 16

- Please note that the Output assignment (PCI 1/2 etc.) for each Output Bus can be changed, as described on [page 34](#).  
To avoid confusion, we recommend that you keep the default order of the outputs.

## The Default Routing of signals from DS2416 into Cubase SX/SL

There are eight separate “lines” from the DS2416 card into Cubase SX/SL. In Cubase SX/SL, these correspond to the four Audio Input pairs (see [page 6](#)). In the DSP Factory Input Console window, the default configuration uses the eight bus sends to route signals from the audio card into Cubase SX/SL (for recording). The following default routing scheme is used:

<b>DS 2416 Bus Send</b>	<b>VST Input</b>
Bus 1	PCI Rec 1/2 1
Bus 2	PCI Rec 1/2 2
Bus 3	PCI Rec 3/4 1
Bus 4	PCI Rec 3/4 2
Bus 5	PCI Rec 5/6 1
Bus 6	PCI Rec 5/6 2
Bus 7	PCI Rec 7/8 1
Bus 8	PCI Rec 7/8 2

This means that to record something through the DSP Factory into Cubase SX/SL, you only need to activate the appropriate Bus Sends for the desired DS Channels. From that point, the recording procedure is the same as when you run Cubase SX/SL with “standard” audio hardware.

# Physical Inputs and Outputs

By default, the physical inputs and outputs of the DSP Factory system are connected to the DS channels in the following way:

## Inputs

Physical Input	DS Channel
DS2416 Analog In Left	17
DS2416 Analog In Right	18
DS2416 Digital In Left	19
DS2416 Digital In Right	20

## Outputs

Bus/Send in the DSP Factory Input Console	Physical Output
Master Stereo Out Left/Right	DS2416 Analog Out Left/Right and DS2416 Digital Out Left/Right
Aux Send 1	IOA/IOB Output 1
Aux Send 2	IOA/IOB Output 2
Aux Send 3	IOA/IOB Output 3
Aux Send 4	IOA/IOB Output 4

“IOA” and “IOB” are the connections to additional input/output units such as the AX44. For each DS2416 card, you can add two extra input/output units (IOA and IOB). Each unit may have 4 or 8 inputs and outputs.

As you see, the default routing only provides access to four extra outputs (for use with external effects, etc.). To be able to use all additional inputs and outputs, you will need to re-configure the input and output routing. This is described on [page 32](#).

## The On-Board Effects

The DS2416 card carries two powerful effect processors, which can easily be accessed with the default routing:

- Signals are routed to the effects using Aux Send 5 (FX Unit 1) and Aux Send 6 (FX Unit 2).  
The effect inputs are in mono.
- The stereo output signals from the effects are routed to the “FX Return channels” (DS Channels 21/22 for FX Unit 1 and 23/24 for FX Unit 2). To avoid feedback, Aux Sends 5 and 6 are disabled for these DS channels.

## Opening the DSP Factory Windows

When Cubase SX/SL detects one or more DS2416 cards, special “DSP Factory” menu items are added to the Devices menu. These are the DSP Factory windows.

Below follows a brief description of each window. For detailed information, click on the page number links.

- **DSP Factory Input Console.**  
This is the main mixer window for the DSP Factory system. Here is where you set levels, panning, eq and dynamics, activate busses and aux sends and select input sources for the DS channels. See [page 14](#).
- **DSP Factory Channel Overview.**  
This window shows all settings (some of which are not available in the Input Console window) for one DS channel at a time. See [page 27](#).
- **DSP Factory Bus/Aux Console.**  
This window contains master send levels for the busses and aux sends. See [page 26](#).
- **DSP Factory FX Editor.**  
This window is used to select effect types and make settings for the two FX Units. It can also be opened directly from the Input Console. See [page 28](#).
- **DSP Factory Output Patchbay.**  
This window provides an overview of the current output routing, and allows you to re-route busses and sends to other physical outputs. It also contains wordclock synchronization settings, for when you use the DSP Factory in conjunction with external digital recorders or other audio hardware. See [page 29](#).

# The Input Console window

The Input Console window is the main DSP Factory window. If you view the DSP Factory as an external digital mixer, feeding and receiving audio signals to and from Cubase SX/SL, this window is the mixer panel.

---

**Static initial settings in the DSP Factory windows are saved with the project.**

---

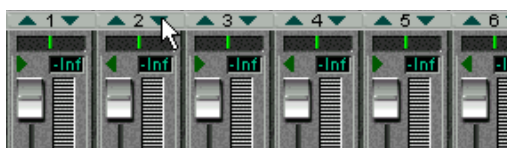
## About the Upper and Lower displays

For each DS channel, there is a large number of controls and settings. Showing them all at the same time would require an impossibly large window. Therefore, each channel strip in the Input Console is divided into two “halves”, the Upper and Lower display. You can select what should be shown on these two displays, independently for each channel:

### The Lower Display

1. Locate the dividing line between the Upper and Lower display for the channel strip.

You may have to scroll the window to see all of the Input Console.



2. Point at the small triangle pointing downward, and press the mouse button.

A pop-up menu appears with the three modes for the Lower display.



3. Select one of the display modes.

If you select the “Narrow” mode, the channel strip will be as narrow as possible to conserve screen space, showing only the basic level and pan controls (see below). The controls in the other modes are described on [page 16](#).

## The Upper Display

1. Locate the dividing line between the Upper and Lower display for the channel strip.
2. Point at the small triangle pointing upward, and press the mouse button.

A pop-up menu appears with the five modes for the Upper display.



3. Select one of the display modes.

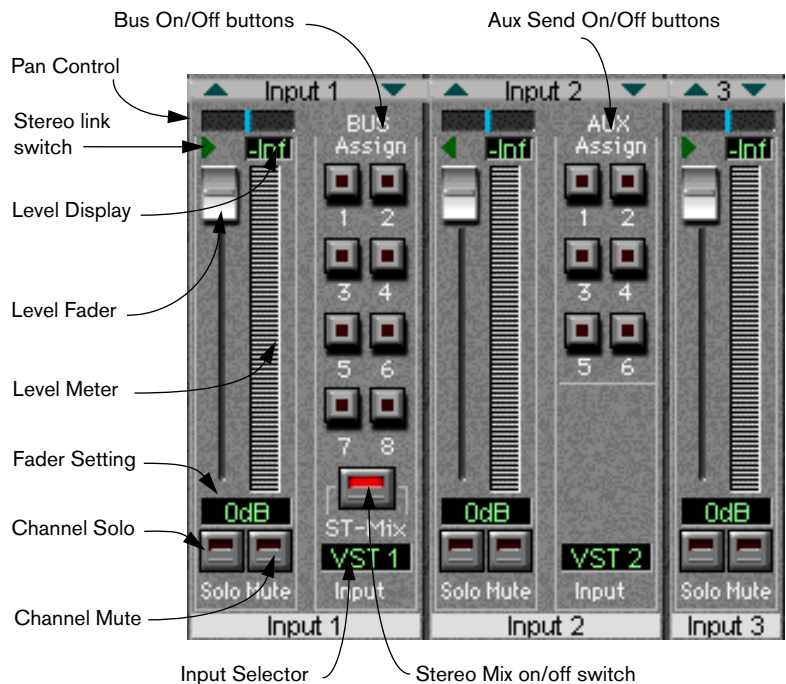
If you select the “Narrow” mode, the channel strip will be as narrow as possible to conserve screen space, with no controls in the Upper display (see below). The controls in the other modes are described on [page 19](#).

## About the “Narrow” mode

The selection of display modes is independent for the Upper and Lower displays, with one exception:

- Selecting the “Narrow” mode for the Upper or Lower display will automatically select the “Narrow” mode for the other display as well. Since the width of the whole channel strip is minimized, there is then no room for any additional controls in either display.

# Channel Controls in the Lower Display



The Lower Display in “Bus Assign”, “Aux Assign” and “Narrow” modes.

Control	Explanation
Pan Control	Sets the stereo position of the channel. This is used when you are assigning channels to the busses (when the Bus Sends are in “Post Pan” mode - see below).
Stereo link switch	When this is activated (when the green arrow is lit), the two channels in an odd-even pair are linked. This means that if you move a control for one of the channels, the other channel will be affected in the same way. Pan is not affected by the Stereo link. ▪ You can also momentarily “stereo-link” unlinked faders and other controls by holding down [Alt] while moving the controls. Conversely, for channel pairs with Stereo link activated, holding down [Alt] allows you to adjust settings for each channel in the pair.
Level Fader	Determines the level of the channel, both when playing back and when recording signals into Cubase SX/SL.

Control	Explanation
Level Meter	Indicates the signal level of the channel. You can select globally how fast the meters should respond (see <a href="#">page 25</a> ).
Level Display	Indicates the signal level numerically, in Peak Hold or continuous mode (see <a href="#">page 25</a> ).
Fader Setting	Indicates the current fader setting in dB.
Channel Solo	Mutes all other channels.
Channel Mute	Turns off the sound of the channel.
Input Selector	This display indicates the currently selected input source for the channel. Clicking on it brings down a pop-up menu, from which you can select another input source.
Bus On/Off buttons	Use these to turn the Bus sends on or off for the channel. These buttons are “mirrored” in the Bus Send panel in the Upper display.
Stereo Mix on/off switch	This switch determines whether the channel is connected to the Stereo Mix (the master fader to the right on the Input Console panel) or not. You may want to deactivate this for channels which you have routed to separate outputs, using the Bus or Aux Sends. The switch is duplicated in the Bus Send panel in the Upper display.
Aux Send On/Off buttons	Use these to turn the Aux sends on or off for the channel. These buttons are “mirrored” in the Aux Send panel in the Upper display.

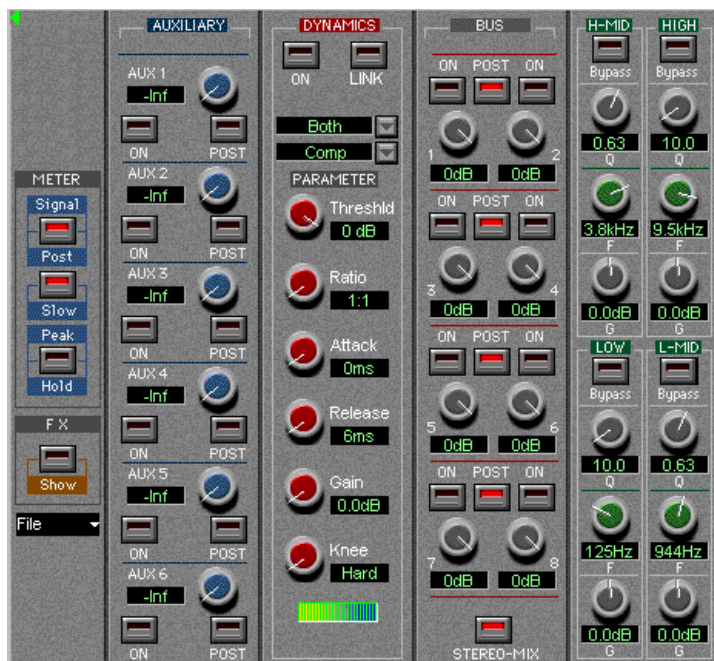
## About the FX Return Channels



The channels labeled “1” - “4” to the right in the Input Console window, are by default used as stereo effect returns for the on-board effect units. FX Return channels 1 and 2 control the return level from FX Unit 1, and FX Return channels 3 and 4 control the return level from FX Unit 2. The FX Return channels differ from the regular channels in the following ways:

- There are no Solo buttons for the FX Return channels.
- The two channel pairs (1-2 and 3-4) are stereo linked by default.
- Aux Sends 5 and 6 (the sends to the on-board effects) are disabled for the FX Return channels, to prevent feedback.

## Channel Controls in the Upper Display



The Upper display in “Aux Send”, “Dynamics”, “Bus Send” and “EQ” modes.

### EQ Mode

When EQ Mode is selected for the Upper Display a four band parametric equalizer is available. Each band has the following parameters:

Bypass	Bypass-switch for the band. If the indicator is lit, the EQ band is disabled.
Q	The Q value for the EQ band, ranging from 10 (narrow) to 0.1 (wide) in 41 steps. Also used to select LPF/HPF or Shelving modes for the Low and High EQ bands (see below).
F	The center frequency of the EQ band, from 21 Hz to 20 kHz in 120 steps.
G	The boost or cut ( $\pm 18$ dB in steps of 0.5 dB).

**Note that all four EQ bands have the same frequency range! The labels “Low”, “L-Mid”, “H-Mid” and “Hi” are only there for convenience.**

### Selecting High/Low Pass or Shelving EQ types

Normally, all four EQ bands are of the regular full parametric type, but you can switch the High and Low bands to Shelving or High/Low Pass Filter mode:

- To select High/Low Shelving mode for the High or Low EQ band, turn the Q knob fully to the right.
- To select High/Low Pass Filter mode for the High or Low EQ band, turn the Q knob fully to the left.  
This converts the High EQ band to a Low Pass Filter and the Low EQ band to a High Pass Filter. In this mode, the Gain (G) setting is disabled.

### Dynamics Mode

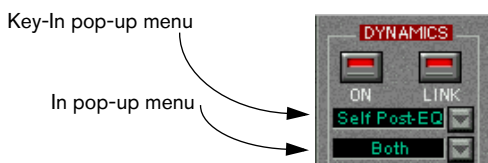
When Dynamics Mode is selected for the Upper Display, you have access to a complete multi-mode Dynamics processor for the channel. You use the Type pop-up menu (right above the “Parameters” label) to select which type of dynamics processing to use:



Type	Description
Comp	A compressor, attenuating signals above a specified threshold level.
Gate	Mutes signals below a specified threshold level.
Ducking	Attenuates the signal when the level exceeds a specified threshold. Normally, the signal used for level detection (the Key In signal - see below) is another than the processed signal. For example, a common use for ducking would be voice-overs, when the background music level should be reduced each time the announcer speaks.

Type	Description
Expand	An expander, attenuating signals below a specified threshold level, thus reducing low-level noise and effectively increasing the dynamic range.
Compend (H or S)	<p>A combination of compressor, expander and limiter: The compressor compresses signals that exceed a specified threshold level, while the expander attenuates signals below a level determined by the threshold level and the Width setting. The limiter prevents the signal from exceeding 0 dB.</p> <p>The two compander types (H and S, for Hard and Soft) have different expansion ratios; CompendH will attenuate low level signals more drastically than CompendS.</p>

Depending on which Dynamics Type you have selected, there are different parameters available. However, some general controls are available in all modes:



ON button	Click this to activate the Dynamics processor for the channel.
LINK button	When this is activated, the dynamics processing is linked for the two channels in an odd-even pair. This means that a mix of the two channels is used to “trigger” the dynamics processor. Use this mode for stereo channel pairs, to maintain the stereo balance.
Key-In pop-up menu	<p>Determines which signal should be used to “trigger” the dynamics processing:</p> <p>Self Post-EQ: The channel signal, post-EQ</p> <p>Self Pre-EQ: The channel signal, pre-EQ</p> <p>Aux 1: The total signal on the Aux 1 bus</p> <p>Aux 2: The total signal on the Aux 2 bus</p> <p>Left Post-EQ: The signal of the left channel in a pair, post-EQ</p> <p>Left Pre-EQ: The signal of the left channel in a pair, pre-EQ</p> <p>(“Left” options are only available for even-numbered channels.)</p>
In pop-up menu	This pop-up menu is only available when Link mode is activated. Use this to determine which signal(s) the dynamics processor should affect; L (left channel in the pair), R (right channel in the pair) or Both.

In the lower half of the Dynamics panel, you will find the actual controls:

Parameter	Description
Threshold	Determines the threshold level at which the dynamics processor is “triggered”. Whether signal levels above or below this level will trigger the processing, depends on the selected dynamics type.
Ratio	(Comp, Expander and Compander types only). Determines the amount of compression/expansion. For the Compander types, this determines the compression, while the expansion ratio is fixed.
Attack	This determines how soon the signal is affected (compressed, gated, expanded, etc.) once the dynamics processor has been triggered.
Release	(Comp, Expander and Compander types only). Determines how soon the dynamics processor returns to normal gain once the signal level goes back below/above the threshold level.
Gain / MGain	(Comp, Expander and Compander types only). Sets the output signal level. Use this to compensate for overall level changes caused by the dynamics processing.
Knee	(Comp and Expander types only). Determines how compression/expansion is applied at the threshold point. “Hard knee” means that the specified compression/expansion ratio is applied as soon as the threshold level is reached, while the five “Soft knee” settings apply the compression/expansion gradually for a more natural sound.
Range	(Gate and Ducking types only). Determines the amount of attenuation when the processing is triggered, with lower values resulting in more attenuation. If you want the Gate/Ducker to mute the signal completely when triggered, set this parameter to its lowest value (-70 dB).
Hold	(Gate and Ducking types only). Determines how long the gate stays open (or how long the ducking effect remains active) once the trigger signal has fallen below the threshold level.
Decay	(Gate and Ducking types only). Determines how fast the gate is closed (or, with Ducking, how fast the gain returns to normal) after the Hold time.
Width	(Compander types only). This determines how far below the threshold level expansion is applied to the signal. If the Threshold level is -10 dB and the Width is set to 20 dB, expansion will be applied to signals with levels below -30 dB (20 dB below threshold).
Reduction Meter	This meter indicates the dynamic gain reduction.

## Bus Send Mode

---

The Bus Sends are always post-fader. This means that in many cases (e.g. when using the busses for recording into Cubase SX/SL) there is no need to adjust the individual bus send levels - you only need to activate the desired busses in the Lower display (Bus Assign mode) and set the recording level using the faders. This assumes that you keep all bus send level knobs at their maximum setting.

---

In this mode you can view and control the eight Bus Sends for the channel. For each bus there is an on/off button (mirrored in the Lower display in Bus Assign mode) and a level control. For each pair of Bus Sends (1-2, 3-4, etc.), there is also a Post Pan switch:

- When the Post Pan switch is activated for a Bus Send pair, the Pan control for a channel is used to pan the signal between the two busses in the pair.  
Panning a signal fully left will send it to the odd-numbered bus only and vice versa. When Post Pan is activated, the Bus on/off buttons are linked for each pair, so that activating or deactivating a Bus Send (in this panel or in the Lower display) automatically activates/deactivates the other Bus Send in the pair.  
This is useful when you are recording in stereo, or when you have assigned the busses to separate outputs for stereo monitoring, etc.
- When the Post Pan switch is deactivated for a Bus Send pair, the channel signal is sent to each activated bus regardless of the Pan setting.  
This may be preferable when you are recording in mono, since it allows you to route a DS channel to a VST input without having to take the Pan setting into account.

Below the Bus Sends you will find a Stereo Mix on/off button, which determines whether the channel should be sent to the main Stereo Mix or not. This button is duplicated in the Bus Assign panel in the Lower display.

## Aux Send Mode

In this mode you can view and control the six Aux Sends for the channel. For each send there is a level control with a numeric display showing the current setting, an on/off switch (mirrored in the Lower display in Aux Assign mode) and a Post-fader switch.

---

Aux Sends 5 and 6 are “hard-wired” to the on-board effect units (FX Unit 1 and FX Unit 2, respectively). To avoid feedback, Aux Sends 5 and 6 are disabled for the FX Return channels.

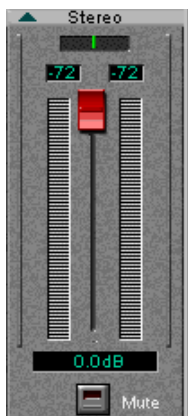
---

---

If you have two DS2416 cards installed, you can address all four effect units by using Aux Sends 3-6.

---

## The Stereo Mix Section



To the right in the Input Console window you will find the Stereo Mix section. This differs slightly from the regular channel strips:

### Lower Display

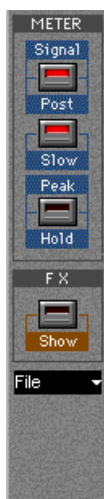
In the Stereo Mix section, there are no different modes for the Lower display. It always contains a stereo master fader with a numerical display, stereo level meters and numeric level indicators, a balance control and a Mute button, for silencing the Stereo Mix output totally. The Mute button does not affect the busses or Aux sends.

### Upper Display

There are two modes for the Stereo Mix Section Upper display: EQ and Dynamics. These both feature the same controls as in the regular channel strips.

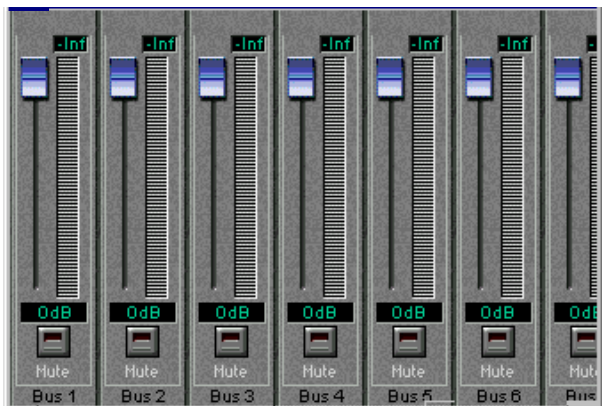
## The Common Panel

To the left of the channel strips you will find a section with common controls:



Control	Description
Meter Post button	Determines which signal the level meters should show: When the button is activated, the meters will show the levels post-fader. When it isn't activated the meters will show the input levels, regardless of fader positions (which is useful when checking input levels from external sound sources).
Meter Slow button	When this is activated, the level meters will drop more slowly, making it easier to discern quick level changes. This switch will also affect the meters in the Bus/Aux Console (see <a href="#">page 26</a> ).
Meter Peak Hold	When this is activated, the numeric level indicator will keep the highest value displayed, making it easy to spot maximum levels. To reset the indicator in Peak Hold mode, click twice on the Peak Hold button. This switch will also affect the numerical level indicators in the Bus/Aux Console (see <a href="#">page 26</a> ).
FX Show	Click this button to open the FX Editor window.
File pop-up menu	This pop-up menu allows you to save/load the "Selected Channel" or "All DS2416 Mixer Settings". <ul style="list-style-type: none"><li>- When you select "Save Selected Channel", a file is created which includes all channel settings (Volume, Pan, EQ, Dynamics, Bus/Aux and Routing) of the selected channel. The file gets the extension ".dschn". You can import these files into the program by selecting "Load Selected Channel".</li><li>- When you select "Save All DS2416 Mixer Settings", a file is created which includes all channel settings of the Input Console, the Bus/Aux Console, the Output Patchbay and the effect settings. The file gets the extension ".dsmix". You can import these files into the program by selecting "Load All DS2416 Mixer Settings".</li></ul>

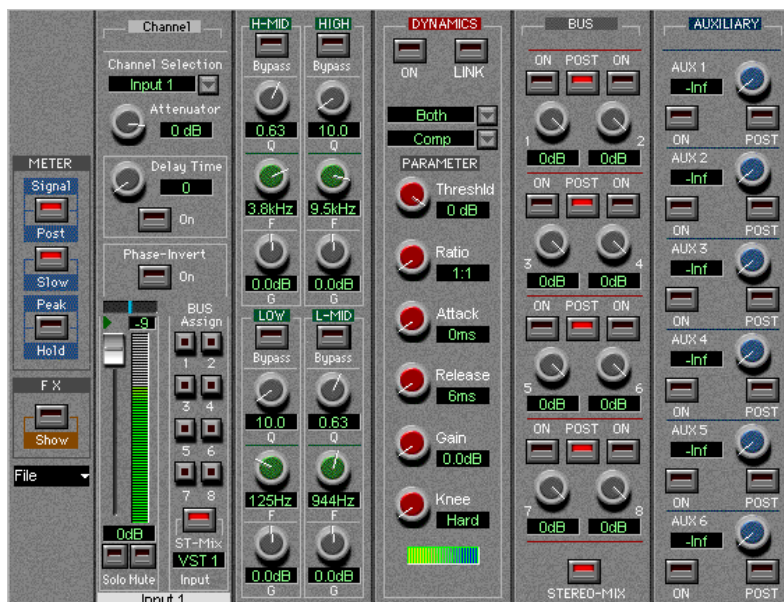
# The Bus/Aux Console



This window contains master level controls for the eight busses and six Aux sends, together with level meters and numerical level indicators. There are also Mute buttons for each bus/send.

- The options for slow/fast metering and Peak Hold in the Input Console window affects the meters and indicators in the Bus/Aux Console as well.

# The Channel Overview

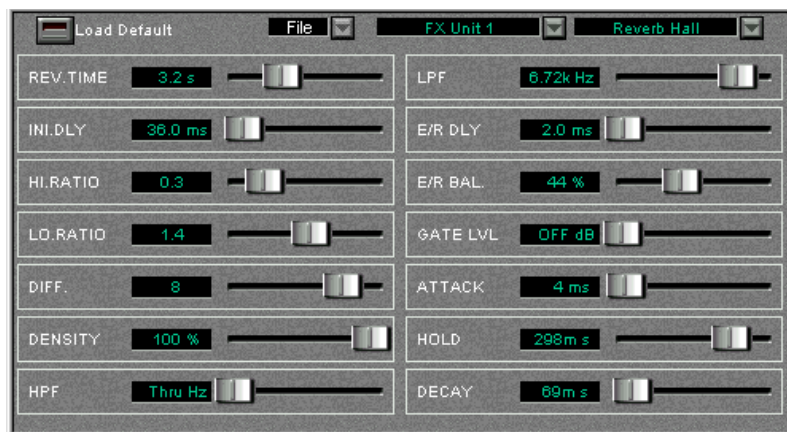


This window allows you to view and access all controls at the same time for a single channel. You select which channel to view by using the Channel Selection pop-up menu in the upper left corner.

The controls in the Channel Overview are the same as in the Input Console window, with the addition of the following parameters:

Attenuator	Allows you to adjust the input signal gain, with a range of -96 to +12 dB.
Delay Time	Allows you to delay a channel by up to 2600 samples. The Delay On button turns the channel delay on or off.
Phase-Invert	Inverts the phase of the signal.

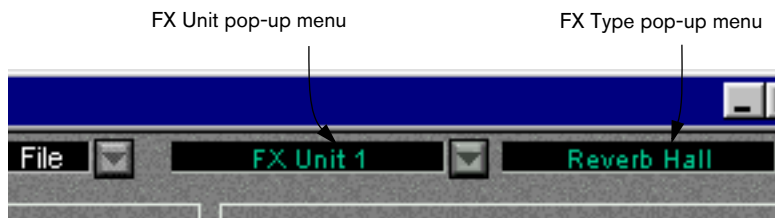
# The FX Editor



This window allows you to select effect types and make settings for the two on-board effect units (labelled “FX Unit 1” and “FX Unit 2”). The window can be opened either from the Devices menu, or by clicking the FX Show button in the Input Console window.

You use the FX Unit pop-up menu to select which unit to make settings for, and then choose an effect type for the selected unit using the FX Type pop-up menu (at the upper right corner).

The File pop-up menu allows you to save/load the settings for the currently selected effect unit.

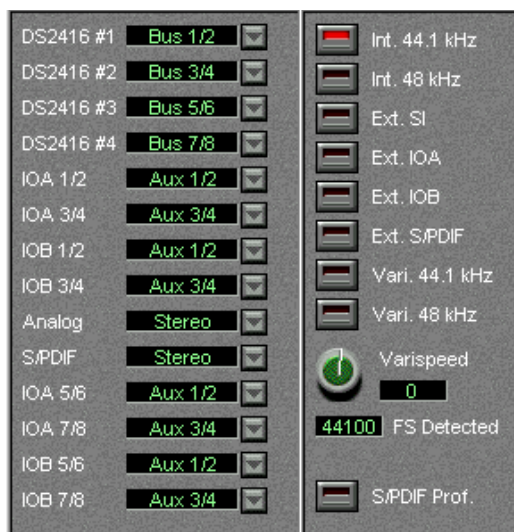


There are 40 different effect types, all of which are available for both FX Units (with the exception of the “HQ. Pitch” effect, which can only be selected for FX Unit 2).

Depending on the selected effect type, various parameters are displayed in the window. You can edit these freely but your changes are lost when you select another effect type. For detailed descriptions of the effect types and parameters, see the DSP Factory documentation.

- If you click the “Load Default” button in the top left corner, all parameters for the current effect type are reset to their default values.

## The DSP Factory Routing Window



This window allows you to view and change the output routing, i.e. which busses and sends are routed to which outputs, and also contains wordclock synchronization settings, for when you use the DSP Factory in conjunction with external digital recorders or other audio hardware.

# Output Routing section

Each bus or send can be routed to any output or any combination of outputs. However, it is not possible to route several different busses to the same output.

In the Routing window, the output pairs are listed to the left:

Output	Description
DS2416 #1 - #4	These are the recording outputs. In Cubase SX/SL, these are connected to the Audio Inputs, so that Rec 1/2 corresponds to Input 1 L/R, etc.
IOA 1-4	Outputs 1-4 on the first additional input/output unit (e.g. an AX44).
IOB 1-4	Outputs 1-4 on the second additional input/output unit.
Analog	The analog outputs on the DS2416.
S/P DIF	The digital outputs on the DS2416.
IOA 5-8	If you have an input/output unit with eight outputs, IOA 5-8 are used to address outputs 5-8 on this unit.
IOB 5-8	As above, but for a second 8-i/o unit (connected as "unit B").

- To select another bus or send for an output pair, pull down the pop-up menu to the right of the output and select another source from the list.

## Wordclock Settings

The right half of the Routing window contains wordclock settings. These are used to determine which sample rate should be used for the audio playback and recording. Use the buttons to select one of the following options:

Option	Description
Int 44.1 kHz	The internal clock is used, with a sample rate of 44.1 kHz.
Int 48 kHz	The internal clock is used, with a sample rate of 48 kHz.
Ext. SI	This can be used when you have another DS2416 or an SW1000XG card installed. Selecting this option means that the current DS2416 card is “slaved” to the other card so that they play back with the exact same sample rate. In a configuration with two DS2416 cards, this option also works as a Cascade switch, as described on <a href="#">page 45</a> .
Ext. IOA	If you have an input/output unit which provides wordclock (connected as unit A), selecting this option synchronizes the DS2416 to the wordclock signal received by the i/o unit. You may for example have an input/output unit with an ADAT interface, connected to another digital recorder - activating this option makes this recorder the master and DS2416 the slave.
Ext. IOB	As “ext. IOA” but for an i/o unit connected as unit B.
Ext. S/PDIF	When this is selected, wordclock is received from the digital input on the DS2416. The card accepts sample rates between 30.08 and 50.88 kHz (32 kHz to 48 kHz, $\pm 6\%$ ).
Vari 44.1 kHz	Select this if you need to make use of the DS2416's varispeed capability. Using the dial below, you can adjust the sample rate $\pm 6\%$ around 44.1 kHz.
Vari 48 kHz	As above, but variable $\pm 6\%$ around 48 kHz.
FS Detected	Displays the sample rate currently detected by the system.
S/PDIF Prof.	Switches the digital output between Professional and Consumer modes.

---

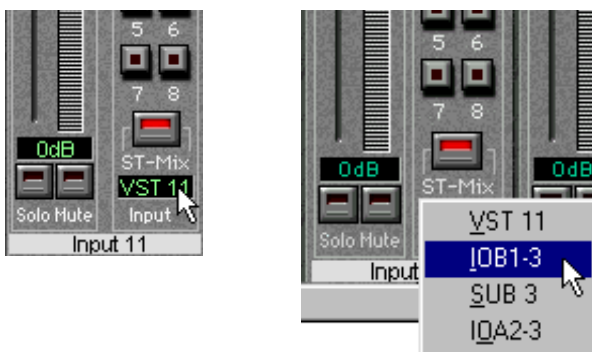
**If you switch sample rate between 44.1 and 48 kHz, the audio output will be reset. When this happens, your mouse pointer may be “stuck” for a short moment - this is nothing to worry about.**

---

# Changing the Input Routing

With the default routing of physical Inputs (see [page 12](#)), you only have access to the analog and digital inputs on the actual DS2416 card, not to any inputs on additional input/output units. If you have one or two input/output units installed, you may want to connect the inputs on these units to DS channels that normally take their input from Cu-base SX/SL. This is done using the Input pop-up menus in the Input Console window:

1. Open the Input Console window.
2. Locate a DS channel for which you want to change the input routing. Note that there are restrictions as to which inputs can be connected to which channels. This means that you cannot route any input to any DS channel - rather there is a fixed connection between the different inputs and the DS channels, as described below.
3. Select “Bus Assign” or “Aux Assign” mode for the channel’s Lower display, to show the Input pop-up menu. It doesn’t matter which of these modes you select.
4. Pull down the Input pop-up menu and select the desired input.



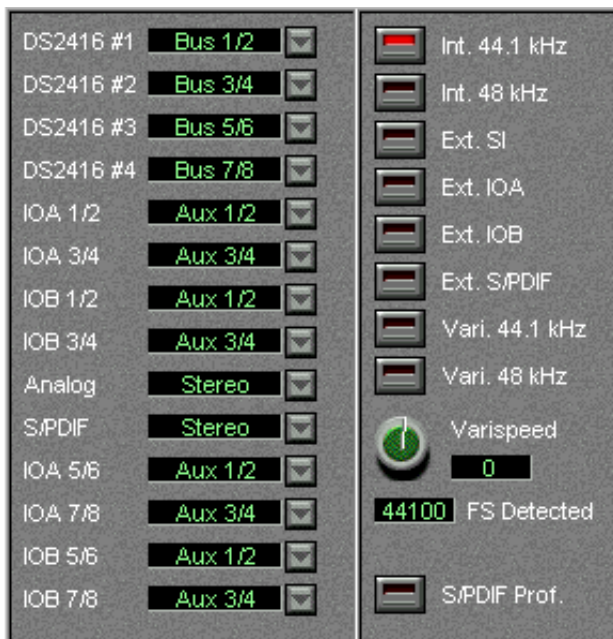
The table on the next page shows which inputs can be selected for each DS channel. Inputs on additional i/o units are labelled IOA1, IOA2, IOB1 or IOB2. “A/B” indicates whether the unit is connected as unit A or B, and “1/2” indicates a four-input unit (“1”) or an eight-input unit (“2”). “IOB2” therefore means “an eight-input unit connected as unit B”. The “SUB” inputs are described on [page 47](#).

Channel	Input Options			
1	VST 1	IOB2-1		
2	VST 2	IOB2-2		
3	VST 3	IOB2-3		
4	VST 4	IOB2-4		
5	VST 5	IOB2-5		
6	VST 6	IOB2-6		
7	VST 7	IOB2-7		
8	VST 8	IOB2-8		
9	VST 9	IOB1-1	SUB 1	IOA2-1
10	VST 10	IOB1-2	SUB 2	IOA2-2
11	VST 11	IOB1-3	SUB 3	IOA2-3
12	VST 12	IOB1-4	SUB 4	IOA2-4
13	VST 13	IOA1-1	SUB 5	IOA2-5
14	VST 14	IOA1-2	SUB 6	IOA2-6
15	VST 15	IOA1-3	SUB 7	IOA2-7
16	VST 16	IOA1-4	SUB 8	IOA2-8
17	Analog In L	IOA1-1	SUB 1	IOA2-1
18	Analog In R	IOA1-2	SUB 2	IOA2-2
19	Digital In L	IOA1-3	SUB 3	IOA2-3
20	Digital In R	IOA1-4	SUB 4	IOA2-4
21	FX 1 Return L		SUB 5	IOA2-5
22	FX 1 Return R		SUB 6	IOA2-6
23	FX 2 Return L		SUB 7	IOA2-7
24	FX 2 Return R		SUB 8	IOA2-8

## Changing the Output Routing

It is possible to route each bus or send (except Aux 5-6) to any output or any combination of outputs. However, it is not possible to route several different busses to the same output. Output routing is done in the Routing window:

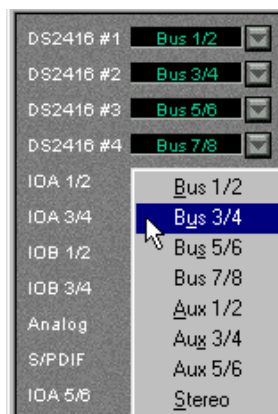
1. Open the Routing window.



2. Locate the output you want to access, in the list to the left.

Note that the outputs listed are outputs pairs. The "DS2416" output pairs are connected to the Cubase SX/SL Inputs, while the "IOA" and "IOB" output pairs are outputs on additional i/o units, connected as unit A and B, respectively.

3. Pull down the pop-up menu next to the output and select the desired Aux or Bus Send pair.



---

Even though the Aux Sends are selected in pairs, it is not possible to use them as “stereo sends”, since the pan setting of the channel is not taken into account. If you need stereo sends (for external stereo input effects or stereo monitoring), use the Bus sends in Post Pan mode.

---

# Single-Track Recording

Recording a single mono or stereo Track in Cubase SX/SL with the DSP Factory is easily done, using the default signal routing:

## Recording a Mono Track

---

**In this section we assume that you are recording a signal connected to one of the analog or digital inputs on the DS2416 card, and that you are monitoring using the analog or digital outputs on the card.**

---

1. In Cubase SX/SL, Record Enable the desired audio mono Track.
2. Select an Input for the Track by pulling down the Input pop-up menu in the Mixer.  
In this example, we assume that you select "IN 1".
3. Open the DSP Factory Input Console window and locate the DS channel to which the input sound source is connected.  
With the default signal routing, the analog inputs on the DS2416 are connected to channels 17 and 18, while the digital inputs are connected to channels 19 and 20.
4. Make sure the Meter "Post" button is deactivated in the common panel in the Input Console window.  
This will make the channel level meters show the input level, pre-fader.
5. Open the Channel Overview window and select the relevant DS Channel.
6. Play the input sound source and adjust the input level with the Attenuator control.  
The signal should be as loud as possible, without reaching 0 dB.
7. Set up the sound the way you want it.  
This may include EQ-ing and using the channel's Dynamics processor. If you want to record with effects, this is described on [page 39](#).
8. Select the Bus Send mode for the channel's Upper display.  
The Bus Sends are displayed. By default, these are used to route signals into Cubase SX/SL for recording.
9. Locate the Bus Send corresponding to the Input you selected in step 2.  
In our example, this would be Bus Send 1.

10. Make sure the Post Pan button is deactivated, activate the Bus Send and turn its send level knob fully up.

---

**Make sure this Bus Send is deactivated for all other DS Channels, to avoid leakage or re-recording background Tracks!**

---

11. Open the Bus/Aux Console window and check the level for the activated Bus (in our example, Bus 1).

This shows you the level of the signal that will be recorded into Cubase SX/SL. Again, this should be as high as possible without reaching 0dB - use the channel fader and the Bus fader to adjust it.

---

**The Stereo Mix fader in the Input Console can not be used for adjusting recording levels in this setup. Rather it is used for your monitoring level.**

---

12. Activate recording in Cubase SX/SL as usual.

## Recording a Stereo Track

---

**In this section we assume that you are recording a stereo signal connected to the analog or digital inputs on the DS2416 card, and that you are monitoring using the analog or digital outputs on the card.**

---

1. In Cubase SX/SL, Record Enable the desired stereo audio Track.
2. Select an Input for the Track by pulling down the Input pop-up menu in the Mixer.  
In this example, we assume that you select "IN 1/IN 2".
3. Open the DSP Factory Input Console window and locate the DS channels to which the input sound source is connected.  
With the default signal routing, the analog inputs on the DS2416 are connected to channels 17 and 18, while the digital inputs are connected to channels 19 and 20.
4. Pan the two channels fully left/right.
5. Link the two channels by clicking the green triangle just below the Pan control.  
Now all settings you make are automatically "mirrored" for the other channel in the stereo pair.

6. Make sure the Meter “Post” button is deactivated in the common panel in the Input Console window.  
This will make the channel level meters show the input level, pre-fader.
7. Open the Channel Overview window and select one of the channels in the stereo pair.
8. Play the input sound source and adjust the input level with the Attenuator control.  
The signal should be as loud as possible, without reaching 0 dB. You may want to check the level of the other channel in the stereo pair as well, in case it is louder.
9. Set up the sound the way you want it.  
This may include EQ-ing and using the channel's Dynamics processor. If you want to record with effects, this is described on [page 39](#).
10. Select the Bus Send mode for the channels' Upper displays and locate the Bus Sends corresponding to the Inputs you selected in step 2 above.  
In our example, this would be Bus Sends 1 and 2.
11. Make sure the Post Pan button is activated, activate the Bus Sends and turn their send level knobs fully up.  
With the Post Pan button activated, a left-panned channel sends its signal to the odd-numbered bus in a pair, and vice versa.
12. Make sure these Bus Sends are deactivated for all other DS Channels, to avoid leakage or re-recording background Tracks!
13. Open the Bus/Aux Console window and check the level for the activated Busses (in our example, Bus 1 and 2).  
This shows you the level of the signals that will be recorded into Cubase SX/SL. If necessary, adjust the channel and Bus faders.

---

**The Stereo Mix fader in the Input Console can not be used for adjusting recording levels in this setup. Rather it is used for your monitoring level.**

---

14. Activate recording in Cubase SX/SL as usual.

## Recording with Effects

If you like to add effects to the signal you are recording, proceed as follows:

1. Set up the controls as described above (for mono or stereo recording).
2. Activate Aux Sends 5 and/or 6 for the input channel(s), and set their send level knobs to medium values.  
If you want the sends to be Post fader, activate the Post buttons for the sends.
3. Make sure the FX Return channels are not muted or have their levels turned down.
4. Open the FX Editor window.  
A quick way to open this window is to click the FX Show button in the Input Console.
5. Play the input source, select effects and make adjustments until you get the desired sound.  
The adjustments may include changing the send levels, FX parameter settings, return levels and even EQ or Dynamics on the FX Return channels.
6. Activate the Bus Sends for the FX Return channels, and set them up in the same way as the input channels.  
Now, the effect sound will be sent into Cubase SX/SL along with the “dry” sound.  
Note that you may have to lower the recording level in the Bus/Aux Console to avoid clipping.
7. Record as usual.

# Multi-Track Recording

The DSP Factory system makes it possible to record up to eight separate audio Tracks at the same time (in a setup with one DS2416 card). Proceed as follows:

---

**In this section we assume that you have at least one additional input/output unit installed, and that you are recording mono signals from several different inputs at the same time, while monitoring through the analog or digital outputs on the card.**

---

1. In Cubase SX/SL, activate Record Enable for the Tracks on which you want to record.  
Make sure that the Tracks all have different Inputs selected.
2. In the DSP Factory Input Console window, use the Input pop-up menus (in the Lower display in Aux or Bus Assign mode) to select the physical inputs which you want to record from.  
There is a fixed relation between the inputs and the DS channels - see [page 32](#) for a listing of the channels and their corresponding physical inputs.
3. Check and adjust the input level for each used channel, as in the previous examples.
4. Select the Bus Send mode for the input channels' Upper displays, and make sure the Post Pan switches are deactivated and the send levels are fully turned up.  
In this example, we assume you are recording several separate mono signals. Therefore the Post Pan switches should be turned off, so that the panning doesn't affect the level of the recorded signals.  
You could also record several stereo signals, or a mix of mono and stereo signals. In those cases, you would want to use two busses for each stereo channel pair, activate the Post Pan switches for these busses, and use the pan controls to direct the channel signals to odd/even busses.
5. Activate one Bus Send for each input channel, so that they are routed to different Cubase SX/SL Inputs.

---

**Make sure these Bus Sends are deactivated for all other DS Channels, to avoid leakage or re-recording background Tracks!**

---

6. Rehearse the recording and adjust the sound (using Dynamics and/or EQ).
7. Activate recording in Cubase SX/SL.

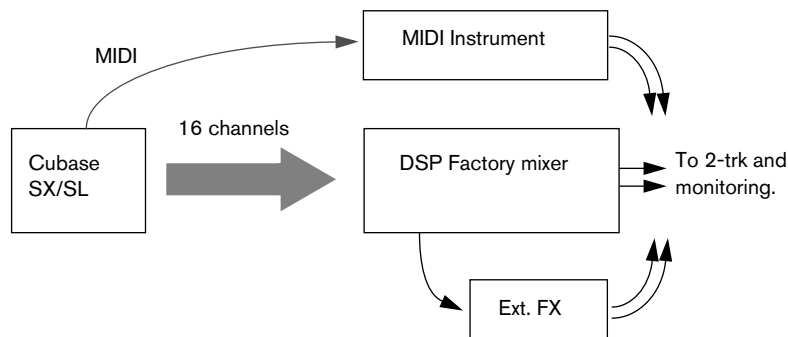
## Mixing down to a Stereo Output

Once you have finished a piece of music, you may want to mix it down to an external two track recorder (DAT, MD, tape, etc.). This example describes how to mix down sixteen separate VST audio channels to stereo, adding the on-board effects, one external effect unit and the stereo output of a MIDI instrument. The external two track recorder is connected to the digital stereo output on the DS2416 with the analog output used for monitoring.

---

**To be able to add external effects, you need at least one additional i/o unit connected (this example assumes that you have one 4 in/4 out unit).**

---



1. Connect your equipment in the following way:

Connect:	to:
The digital outs on the DS2416	The digital ins on the two track recorder.
The analog outs on the DS2416	Your monitoring system.
Output 4 on the additional i/o unit	The input on the external effect unit.
The stereo outs on the external effect	Inputs 3 and 4 on the additional i/o unit.
The stereo outs on the MIDI instrument	The analog inputs on the DS2416.

You also need a working MIDI connection from the computer to your MIDI instrument.

2. In Cubase SX/SL, you should route mono channels (in pairs) to the same Output Bus, and pan them fully left/right. In other words, if you have six mono Tracks, these should be routed to three separate Output Busses.
- This panning is only done to separate the channels, by directing them to separate sides of one stereo Output Bus. The actual panning for the stereo mix is done in the DSP Factory Input Console window.
3. In the Input Console window, make sure that DS channels 1 to 16 have the "VST" input option selected.
- Now the sixteen audio channels from Cubase SX/SL will appear on DS channel 1 to 16.
4. Activate the stereo link for DS channels 17 and 18, and use the Input pop-up menu to select the analog inputs (A In L/R) for these channels.
- The sound of the MIDI instrument is now routed to these channels.
5. Activate the stereo link for DS channels 19 and 20, and use the Input pop-up menu to select the inputs "IOA1-3/4" for these channels.
- These channels will now serve as effect returns for the external effect.

**Make sure that Aux Send 4 is deactivated for channels 19 and 20, to avoid feedback!**

6. Open the Routing window and route the signals in the following way:

Output	Bus/Aux Send Pair	Comment
IOA3/4	Aux 3/4	External effect send (only output 4 is used).
Analog	Stereo	Monitoring.
S/P DIF	Stereo	Two track recorder.

7. Check that your audio channels play back as desired and adjust EQ/Dynamics if necessary.
8. Make sure the input signals from the MIDI Instrument are as loud as possible (without clipping), to avoid unnecessary noise.
9. Set up the effect sends for the desired DS channels.  
Aux Send 4 is routed to the external effect and Aux Sends 5 and 6 are routed to the on-board FX units. Again, make sure that Aux Send 4 is deactivated for channels 19 and 20 to avoid feedback!
10. Make effect settings for the internal and external effects, and adjust the effect return channels.
11. Put your two track recorder in "Record-stand by" mode or similar, so that you can check the input levels.

---

**A word of caution: Most digital recorders automatically switch to the correct sample rate when recording, but there may be cases when you need to adjust this manually. Make sure the recorder records at the sample rate used by the DS2416 card - consult the manual for the two track recorder if necessary.**

---

12. Play back the music and adjust the input level on the two track recorder with the Stereo Mix fader.  
It should be as high as possible, without ever clipping. If you need to amplify the signal, use the Attenuator control in the Channel Overview for the Stereo Mix.

---

**In this setup, the Stereo Mix fader will also govern the monitoring volume. If this is a problem, you could consider connecting your monitoring equipment to outputs 1 and 2 on the i/o unit instead, and use Busses for monitoring. However, you should make sure that all channels have these Busses fully turned up and set to Post Pan mode (to hear exactly the same as what you record).**

---

13. Perform the mixdown.

## Mixing down to a new Track in Cubase SX/SL

An alternative to mixing down to a separate two track recorder is to mix down to a new audio file. If you were using Cubase SX/SL alone, you would use the Export Audio Mixdown feature for this, but this cannot include the DSP Factory mixing and effects (since the DS2416 card actually is an external mixer - albeit within your computer). Instead you can re-record the mix to a new Stereo Track in Cubase SX/SL, thereby creating a mixdown audio file.

- When you re-record this way, the signal stays in the digital domain and will not be degraded by D/A-A/D conversion etc.
  - The example below does exactly the same as the previous example (mixdown, adding internal and external effects plus the output of a MIDI Instrument), although the result will be a new stereo audio file instead. However, this method can also be used if you just want to mix a few channels (e.g. make a stereo mix of the drums) or add effects to a single channel to free up the on-board effect processor, etc.
1. Set up the DSP Factory windows and make connections just as in the previous example.  
In this case you don't have to connect any external two track recorder though.
  2. Create a new stereo audio Track in Cubase SX/SL, set to Inputs 1/2.
  3. In the Routing window, pull down the pop-up menu for the "DS2416 #1" output pair and select "Stereo".  
This connects the Stereo Mix to Inputs 1/2 in Cubase SX/SL.
  4. Activate playback and check the input level in Cubase SX/SL.  
If necessary, adjust the level using the Stereo Mix fader and Attenuator control.
  5. Activate recording.

## Working with two DS2416 Cards

If you have two DS2416 cards installed, these can be connected using the SI/SO (Serial In/Out) connections on the cards, giving you access to integrated 48-channel mixing with 4 separate on-board FX units.

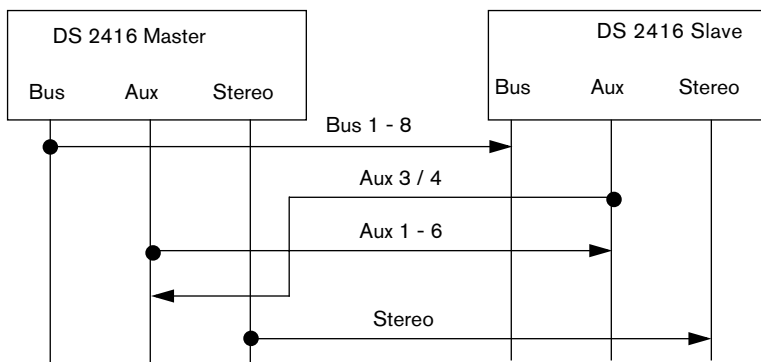
1. Use the supplied serial cables to connect the SO output on card A to the SI input on card B, and vice versa.  
The two cards should be connected “both ways”. Follow the instructions in the documentation that was included with the cards.
2. Open the ASIO Control Panel and select the “Yamaha DS2416 2 cards” Preset.
3. Open the Routing window.  
This will now have two additional columns containing output routing and wordclock settings for the second card.
4. Select the “Ext. SI” option in the Wordclock section for one of the cards.  
This will cause one of the DS2416 cards to receive wordclock from the other card, ensuring stable synchronization. In effect, the card for which you activated the “ext. SI” option is now the “Slave” and the other card is the “Master”.

Once you have connected the two cards as described above, there will be 16 Output Busses and 8 Input pairs in the VST Connections window. Furthermore, the Input Console will hold the double number of channels (40 input channels, 8 effect return channels and two Stereo Mix channel strips).

## Routing

With two DS2416 cards, the signal routing has the following properties:

- There are 32 separate “lines” from Cubase SX/SL to the DSP Factory (sixteen stereo Output Busses).  
By default, VST 1 to 16 are assigned as inputs to DS Channels 1 to 16, and VST 17 to 32 are assigned as inputs to DS Channels 21 to 36.
- The Busses, Aux Sends and Stereo Mix for the two cards are connected in the following way:



The Busses, Aux Sends and Stereo Mix on the Slave card will receive the signals from the corresponding busses on the Master card, and the signals will be summed. In the opposite direction, only Aux Send 3/4 from the Slave card will be connected to the Master card's Aux bus. This makes it possible to access all four FX units from all channels, as described below.

Due to this routing, it is not possible to record on all sixteen channels simply by using the busses. Instead you would need to route the eight Busses on the Slave card to VST Inputs 1 to 8, and route the Aux Sends and Stereo Mix on the Master card to Inputs 9 to 16.

## Effects

When you have two DS2416 cards installed, the Aux 3-4 Sends will automatically be routed to the FX Unit on the Master card. All DS channels (regardless of which card they "belong to") can access all four FX units.

In the FX Editor, there will be four options on the "FX Unit" pop-up menu, labelled FX Unit 1 to 4. Aux Sends 5 and 6 are routed to FX Unit 1 and 2 (as with one card), while Aux Sends 3 and 4 are routed to FX Unit 3 and 4.

---

**Do not route the FX Return channels to Aux Send 3-4 – this may cause a feedback loop.**

---

## Combining a DS2416 with a SW1000XG Card

If you have a Yamaha SW1000XG sound card installed, you can connect it to the DS2416 card using the SI/SO (Serial In/Out) connections on the cards.

- Use the supplied serial cable to connect the SO output on the SW1000XG to the SI input on the DS2416.  
Follow the instructions in the documentation included with the cards.
- In the Routing window, select the “ext. SI” option in the Wordclock section.  
This will cause the DS2416 card to receive wordclock from the SW1000XG card, ensuring stable synchronization.

Having connected the two cards, you will be able to receive 8 separate audio channels from the SW1000XG and mix them in the DS mixer. These 8 channels appear as the “SUB 1-8” input sources, selectable using the Input pop-up menus for DS channels 9 to 16, or 17 to 24.

# Remote Controlling the DSP Factory Mixer

It is possible to use a Yamaha 01V digital mixer to remote control the DSP Factory mixer in Cubase SX/SL.

## Setting Up

---

**Make sure to read the chapter about Remote Control in the Operation Manual, for general information about remote control in Cubase SX/SL.**

---

1. Connect the 01V to your MIDI Interface.  
The mixer should be connected “both ways” to allow feedback to indicators and motorized faders.
2. Make the following settings on the 01V (see the 01V manual for details):
  - Enable MIDI Parameter Change Receive and Transmit.
  - Disable MIDI Control Change Receive and Transmit.
  - Set Device ID / MIDI Channel Receive to “1”.
  - Local Control on the 01V should be set to “Off”.  
This ensures that you don't change the internal settings on the 01V instead of the DSP Factory parameters.
3. In Cubase SX/SL, pull down the Devices menu and select Device Setup.
4. Select “Yamaha 01V”.
5. Pull down the Input pop-up menu and select the MIDI Input to which the 01V is connected.
6. Pull down the Output pop-up menu and select the MIDI Output that is connected to the 01V.
7. Click OK to close the dialog.  
You are now ready to use 01V as a remote control unit.

# About the Layouts

As when you are using the 01V to control the mixer parameters, there are two different “Layouts” for controlling the DSP Factory Mixer in Cubase SX/SL (there are two Layouts for controlling the Mixer, as described in the Operation Manual). Which channels on the 01V control which DS-channels in Cubase SX/SL, depends on the selected Layout. However, the controllable parameters for each “channel strip” are the same in each layout (see below).

- You switch between the Layouts by pressing the Memory button on the 01V panel.  
Page 1 displays VST Layout 1, page 2 VST Layout 2, page 3 DSP Factory Layout 1 and page 4 DSP Factory Layout 2.

## Layout 1

Channels in 01V DS-Channels in Cubase SX/SL DSP Factory Mixer	
1 to 12	1 to 12
13/14	13 (activate the Stereo Link for channel 13 to control channels 13 and 14 simultaneously)
15/16	15 (activate the Stereo Link for channel 15 to control channels 15 and 16 simultaneously)
Stereo Master	Stereo Mix
Return 1	FX Return 1 (activate the Stereo Link for FX Return channel 1 to control FX Return channels 1 and 2 simultaneously)
Return 2	FX Return 3 (activate the Stereo Link for FX Return channel 3 to control FX Return channels 3 and 4 simultaneously)
Aux Master 1-6	Aux Master 1-6

## Layout 2

---

### Channels in 01V DS-Channels in Cubase SX/SL DSP Factory Mixer

1 to 4	17 to 20
Stereo Master	Stereo Mix
Return 1	FX Return 1 (activate the Stereo Link for FX Return channel 1 to control FX Return channels 1 and 2 simultaneously)
Return 2	FX Return 3 (activate the Stereo Link for FX Return channel 3 to control FX Return channels 3 and 4 simultaneously)
Aux Master 1-6	Aux Master 1-6

---

## Controllable Parameters

### Channels 1 to 20

- Volume.
- Pan.
- Mute.
- Aux Send 1-6 ("01V Effect 1 and 2" correspond to Aux 5 and 6).
- EQ Freq, Gain and Q-values (four bands).
- Stereo Link switch.
- Attenuator.
- Phase Invert Switch.
- Bus Send On 1 to 4.
- Stereo Mix switch.

### FX Return Channels

- Volume.
- Pan.
- Mute.
- Aux Send 1-4.
- EQ Freq, Gain and Q-values (four bands).
- Bus Send On 1 to 4.
- Stereo Mix switch.

### Stereo Mix Section

- Volume.
- Balance.
- Mute.
- EQ Freq, Gain and Q-values (four bands).

## **Index**

## A

- ASIO Drivers 5
- Attenuator 27
- Aux Assign Mode
  - Controls 16
  - Selecting 15
- Aux Send Mode
  - Controls 23
  - Selecting 15
- AX44 Audio Expansion Units 3

## B

- Bus Assign Mode
  - Controls 16
  - Selecting 15
- Bus Send Mode
  - Controls 23
  - Selecting 15
- Bus/Aux Console 26

## C

- Channel Overview 27

## D

- Delay (Channel) 27
- Devices (16 bit) 5
- DS2416 Digital Mixing Card 3
- Dynamics Mode
  - Controls 22
  - Link 21
  - Selecting 15
  - Type 20

## E

- Effects
  - Default Routing 13
  - Return Channels 18
  - Sends 24
  - Settings 28
  - With Two Cards 46
- EQ Mode
  - Controls 19
  - Selecting 15
  - Shelving/HPF/LPF 20

## F

- Fader 16
- FX Editor 28
- FX Return Channels 18

## I

- Input Console 14
- Inputs
  - Assigning in Cubase SX/SL 6
  - Default Routing 12
  - Routing 32
  - Selecting in Cubase SX/SL 8
- IOA/IOB 12

## L

- Level Fader 16
- Level Meter 17
- Link (Dynamics Mode) 21

## M

- Meter Buttons 25
- Mixing down 41
- Monitoring 37
- Mute 17

## N

Narrow mode 15

## O

Output Busses 7

Output Routing 29

Outputs

    Default Routing 12

    Physical 30

    Routing 34

## P

Pan 16

Peak Hold 25

Phase Invert 27

## R

Recording

    Mono 36

    Multi-Track 40

    Stereo 37

    With Effects 39

Remote Control 48

Remote Control (01V) 48

Routing

    Changing 32

    Default 9

    With two cards 45

## S

Sample Rate 31

Solo 17

Stereo link 16

Stereo Mix 24

Stereo Mix on/off 17

SUB Inputs 47

SW1000XG Card 47

## W

Wordclock 31

## Y

Yamaha DS2416 Drivers 5